



THE Arbor-Nomics® BUGGETTE



What's the Best Grass for the Atlanta Area?

Warm-season Bermuda and Zoysia and cool-season Fescue are extremely popular choices in our area – with good reason. These grasses generally do very well here and each has certain strengths that homeowners appreciate.

Understanding these strengths (and some of the major differences between the grass types) can help you make smart decisions about landscaping projects and other alterations that you might be planning for your property.

Bermuda



Drought-Tolerant: Although it won't look its best during prolonged dry spells, Bermuda will bounce back beautifully once it starts getting enough water again.

Tough: Bermuda holds up well to heavy foot traffic and can withstand moderate populations of armyworms, mites, and other pests better than many other grasses.

Zoysia



Versatile: Zoysia does well in both partial shade and sunny areas; however, it is not quite as drought-tolerant as Bermuda.

Pest-Resistant: It's less affected by diseases, insects, and weeds than other types of grass.

Fescue



Weed-Resistant: With regular fall aeration and overseeding, Fescue's growth habit makes it more resistant to weeds than many other grasses.

Shade-Tolerant: In conditions where Bermuda or Zoysia would fail to thrive, Fescue flourishes, making it ideal for lawns that are shaded by trees or nearby buildings.

How to Irrigate During Water Restrictions

Atlanta summers usually bring a period of restricted water use. If that happens this summer, **your yard does not have to go thirsty.** You can still irrigate, just on a restricted schedule.

Lawns: Even-numbered addresses water on Wednesdays and Saturdays; odd-numbered addresses on Thursdays and Sundays. Watering must be done before 10 am or after 4 pm.

New Installations: New or transplanted plants, seeds, and turf can be watered any time of day for 30 days after installation.

Food Plants: There are no day or time restrictions. However, it is still a good idea to water before 10 am or after 4 pm, when water loss due to evaporation is minimal.

We always recommend checking with your local water authority for any policy changes.



Join Arbor-Nomics! We are hiring Certified Landscape Specialists and Outside Sales Representatives. Visit [Arbor-Nomics.com/JoinOurTeam](https://www.arbor-nomics.com/JoinOurTeam) for more information.

Bare in Mind

by Josh Bare



Reality shows tend to get a bad rap. They're often dismissed as trashy, totally frivolous, or completely ridiculous. And I suppose there are plenty of shows where that is the case, but the same can be said of certain sitcoms and dramas. So why is the reality format the focus of this type of criticism?

It probably stems from two things. One is the un-reality that's baked

right into some of them. I mean, in what reality would any of us find ourselves lying in a tank filled with thousands of worms or climbing on cars suspended over the Las Vegas strip? The other is the fact that they're unscripted (well, for the most part, at least), and I think that gets associated with cheapness.

Continued on page 4

July-August Lawn Care

Application #4

Please note: There are times when we may need to modify the treatments we apply due to weather.

LAWN TREATMENTS

Weed Control

All Programs. All lawns received a weed-control treatment.

Fertilization

All Programs. All lawns received a healthy dose of Arbor-Nomics' Special Blend fertilizer.

Pest Control

Gold, Gold Plus & Platinum. We applied our Outdoor Pest Control to repel fire ants, fleas, spiders, and ticks.

Disease Control

Silver Plus, Gold Plus & Platinum. We applied a fungicide to prevent brown patch and dollar spot, two fungal diseases prevalent this time of year.

Attention Silver & Gold Customers: Fungicide treatments are available to you as an add-on service. If you see brown circular

patches – or any discolored spots – on your lawn, call us right away. We'll schedule a FREE service call and provide an estimate for treatment.

ORNAMENTAL TREE & SHRUB TREATMENTS

Pest Control

Gold, Gold Plus & Platinum. We applied an insecticide that controls aphids, caterpillars, Japanese beetles, and lace bugs and another that combats spider mites.

Disease Control

Gold, Gold Plus & Platinum. A fungicide was applied to control diseases like powdery mildew and leaf spot.

WHAT YOU NEED TO DO UNTIL OUR NEXT VISIT

Ensure Your Lawn Gets an Inch of Water Each Week

If rainfall doesn't provide enough water, make up the difference with

irrigation. To discourage fungal diseases, avoid watering at night or late in the evening. The best time to water is before 10 am; when that's not possible, aim for around 4 pm.

Raise Your Mower Blade As High As Possible for Fescue

A taller Fescue lawn keeps the soil temperature lower, which is good for this cool-season grass.

Inspect Your Yard Once a Week

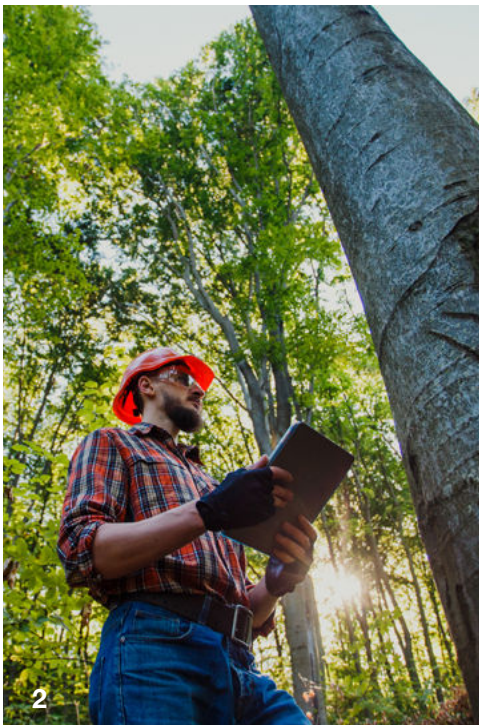
Be on the lookout for discolored patches in lawns and on the leaves of trees and shrubs, as well as signs of Japanese beetle and armyworm infestations. Call us immediately if you see any problems so we can help stop them from spreading.

Replenish Mulch Around Shrubs to 3 Inches

A 3-inch layer of mulch helps keep shrubs hydrated by reducing moisture evaporation from the soil. Be sure to keep it to three inches; a thicker layer will reduce the amount of water from rain and irrigation that reaches the soil.

QUESTIONS ABOUT OUR SERVICE OR YOUR YARD?

Contact us at 770.447.6037 or info@arbor-nomics.com. Our customer service line is open Monday through Friday, 8 am – 5 pm. While you're always welcome to call us, please be aware that this is our busy season. If your question isn't urgent, you can avoid waiting on hold by emailing us or calling after hours and leaving a message with your phone number. We'll return your call the next business day.



What's a Tree Health Care Proposal?

Trees, like all plants, are vulnerable to improper care and poor environmental conditions. Excessive use of herbicides and synthetic fertilizers and activities that damage roots or degrade soil are just some of the things that leave trees in a weakened state.

At Arbor-Nomics Tree, we often prepare health care proposals for our clients to improve the long-term survival

of affected trees. Based on an analysis of tree health, the proposal outlines recommended services, which can range from relatively simple treatments, like soil therapy, to more complex measures, like transplantation or removal.



Need knowledgeable guidance on caring for your trees?
Call us at 770-368-0072.

5 Tips for Creating an Inviting Outdoor Space

No matter the size of your yard, patio, porch, or deck, you can make it a welcoming space that you, your family, and friends enjoy spending time in. Here are just a few ideas to get your creative juices flowing.



- 1 Freshen up your potted plants.** Your patio or porch will instantly feel cozier when you add some new plants. A mix of colorful summer flowers and potted ferns or other green plants creates a cheerful and relaxing vibe.
- 2 Consider a fire pit.** Who can resist gathering around a fire? Consider adding a fire pit and some seating to your patio for casual get-togethers and for roasting hot dogs and marshmallows with the kids.
- 3 Create ambiance with lighting.** The right lighting can transform any backyard, porch, or patio into a space that feels almost magical. Twinkle lights and battery-powered decorative lanterns are both great safe, low-maintenance options. They'll also let you enjoy your space longer into the evening.
- 4 Pack a punch with color.** To brighten up your porch or patio, add colorful outdoor throw pillows to your seating. There are countless choices for any décor style or color scheme — just be sure to choose an outdoor fabric that resists mold and mildew and can be easily cleaned. If your budget allows, consider adding an outdoor rug to define your space and add even more color.
- 5 Protect against pests.** Don't let bugs drive you from your outdoor oasis. We offer treatments to control mosquitoes, ticks, fire ants, and more.

And while you're spending all that time outdoors, don't forget about your lawn. Be sure it's getting proper fertilization and irrigation to help it stand up to the extra foot traffic and keep it looking great.

Helpful Contact Information

ARBOR-NOMICS TURF, INC.

770.447.6037

800 Langford Drive, Suite A
Norcross, GA 30071

arbor-nomics.com

VICE PRESIDENT

Doug Cash

Cell: 770.596.8388

doug@arbor-nomics.com

CUSTOMER RELATIONS

Ward Frost

Cell: 678.638.4556

ward@arbor-nomics.com



Ways to Pack Summer with Family Fun

Family vacations and camps for the kids are great, but they sure can do a number on your bank account. Thankfully, Atlanta is brimming with freebies that'll keep summer break fun-filled for the kids. Here are some of our favorites, but you can find many more in Atlanta and beyond at discoveratlanta.com. Have fun!

- **Hit the Splash Pads:** Splash around in the Fountain of Rings at Centennial Olympic Park or the Legacy Fountain at Piedmont Park. Pack a picnic and make a day of it.
- **Swim Freely:** The Piedmont Park pool is free from 3 to 5 p.m. every weekday.
- **Head to the Playground:** Kids can work off tons of energy at the iconic ATL playground at Woodruff Park.
- **Pop Some Ollies:** The Old Fourth Ward Skate Park is always free and has sections marked off for beginner, intermediate, and advanced skateboarders.
- **Catch a Movie in the Park:** Summer screenings are free every Thursday at dusk in Central Park at Atlantic Station. Pack a picnic or enjoy discount to-go options from many Atlantic Station restaurants. Just mention "Movies in Central Park" or present a Movies + Dinner card (available from the concierge) to receive special pricing.
- **Visit the Children's Museum:** From 1 to 7 p.m. on the second Tuesday of every month, admission to the Children's Museum of Atlanta is free.
- **Explore the BeltLine:** Stroll or bike the Atlanta BeltLine and take in a self-guided art tour. A great way for kids to get a taste of Atlanta's vibrant art scene.



But, at the end of the day, none of this seems to matter: Reality programming is wildly popular and here to stay.

Which brings me to the show that's currently got my attention: *Big Timber*. Yes, a show about logging, but you don't have to be a lumberjack or woodworker to get into it. Set in British Columbia (with beautiful scenery!), it follows Kevin, who along with his wife, Sarah, owns and operates the family lumber mill.



Vancouver Island

Kevin purchased a claim of trees in the mountains on Vancouver Island and has only so much time to get all the timber out. Each of the logs can be worth tens of thousands of dollars once it's milled, so anything that's left behind is a big financial hit. To make sure they don't take that hit, Kevin is consumed with keeping both his crew and his equipment going, while overcoming obstacles that crop up along the way.

And there are plenty of obstacles.

Just getting to the job site can entail hiking up or down a mountain strewn with fallen trees. And, as you can imagine, the cranes and other equipment needed to move and haul out 20 or 30 tons of logs at a time are extremely expensive. So Kevin and his son, a mechanic, need to keep the work-worn machinery they already own up and running – and what they don't have,



Kevin tries to find used. So either way, something always needs to be repaired. And not every repair comes straight out of a mechanic's toolbox.

In one episode, a barge Kevin plans to use to transport logs is leaking. After pumping out the water, he crawls inside and patches the hole with just toilet-bowl wax and a rag. Now that's some pretty creative problem-solving. And I think that's what makes this show so captivating. Despite all the danger, the endless stream of problems, and not even knowing for sure that the task at hand is doable, Kevin relies on his wits and resourcefulness and just presses on with total determination.

When work's going too slowly on one part of the mountain, he wastes little time finding and buying a crane big enough for the job (used, of course) and has it shipped in on a barge. After the painstaking hours it takes to get



The Bare family visiting Georgia's #1 champion American elm, located in Norcross. As of August 2016, this tree stood 80' tall and had a circumference of nearly 19.5'.

the crane in place, he then reaches out to his network in hope of finding someone who can operate it properly.

I'm sure some of the drama is drummed up a bit (like on every reality show), but I've convinced myself that what plays out on *Big Timber* is in some way relatable and at least somewhat true. For instance, it's fascinating to have a window into Kevin's brain as he works to solve problems – and it's kind of inspiring to watch a guy who seems always willing to take one leap of faith after another.



I had a small tree come down in the backyard during one of our spring storms. I pulled out my trusty Stihl chainsaw (bought new from a nice business in Tucker, American Chainsaw & 2-Cycle), put on the safety gear, and got to chopping it up. I'd be lying if I said I wasn't thinking of *Big Timber* the whole time and hoping it would be renewed for a second season.

Turns out it is. And if it weren't for the strong language – Kevin in particular gets bleeped out a lot – I'd be happy to have all my kids watch it with me. Instead, I hope that some of you tune in and get the same enjoyment from it that I do.

Please let me know any thoughts you might have about this article. I can be reached at 678.313.4568 or Josh@Arbor-Nomics.com.